



Standardizing minimally invasive cancer treatments

FIND OUT HOW

Epione[®] standardizes procedure workflow in one single solution

Setup

1 Plan

2 Target

3 Deliver

4 Confirm



Percutaneous tumor ablation is underutilized as a first-line treatment for patients due to procedural workflow limitations and complexities.

Our system standardizes minimally invasive ablation through image-guided navigation, advanced robotic assistance, and tumor ablation confirmation.

Epione[®] standardizes procedure workflow in one single solution

Setup

1 Plan

2 Target

3 Deliver

4 Confirm

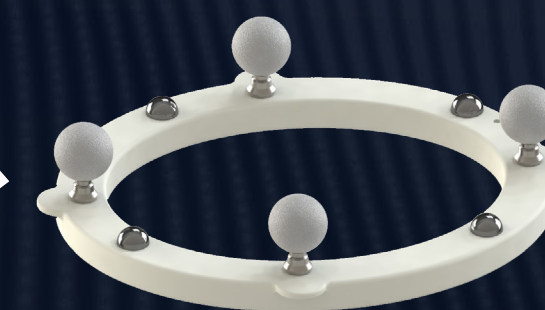
Conveniently mobile

Allowing you wheel-in and wheel-out flexibility in your CT suites



Simple workflow

- Easy patient prep and set up
- Only the reference is attached to patient
- Enables clear visibility and movement in and out of the CT gantry



PATIENT REFERENCE

SEE IT IN ACTION



▶ WATCH Patient Setup

Epione[®] standardizes procedure workflow in one single solution

Setup

1 Plan

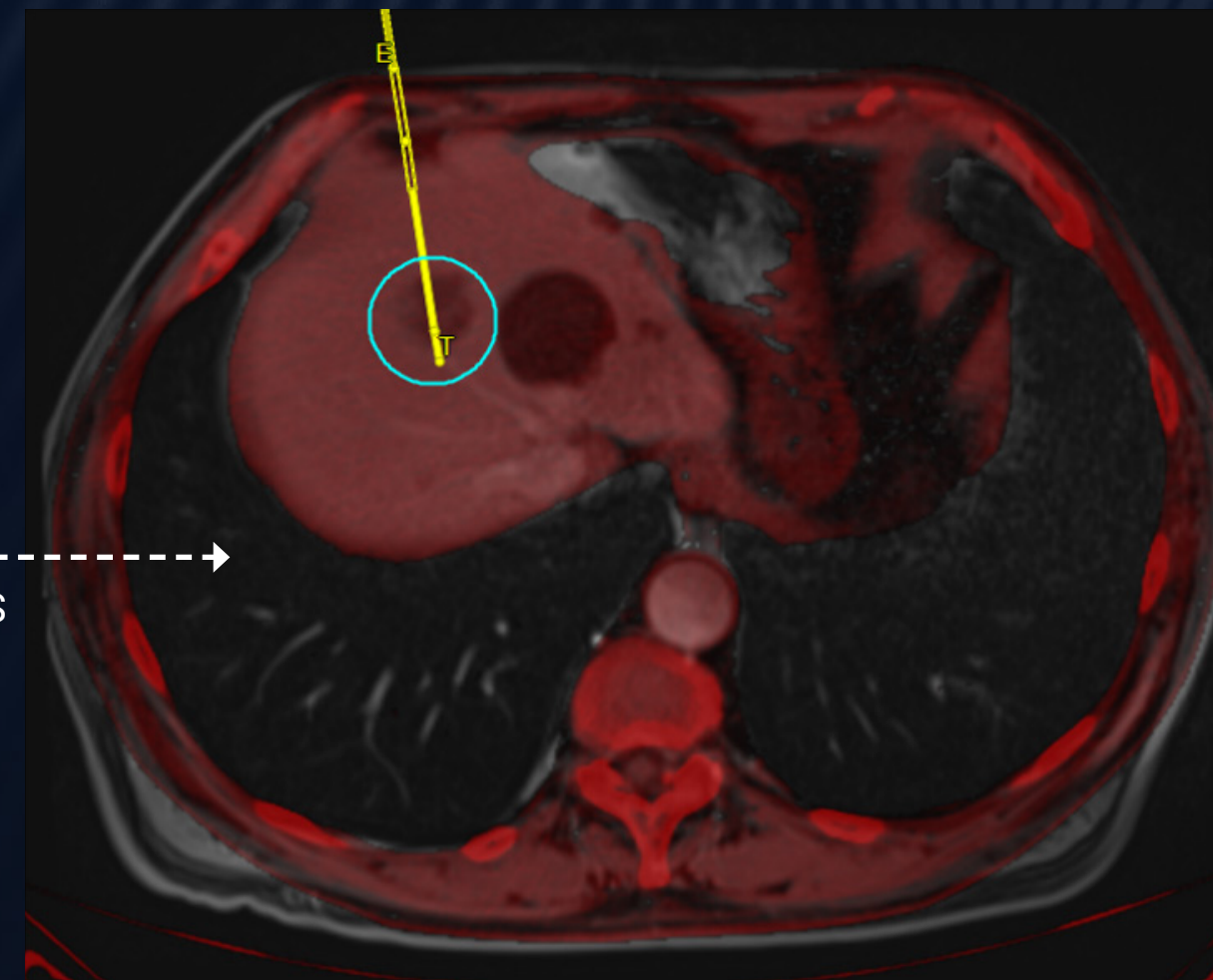
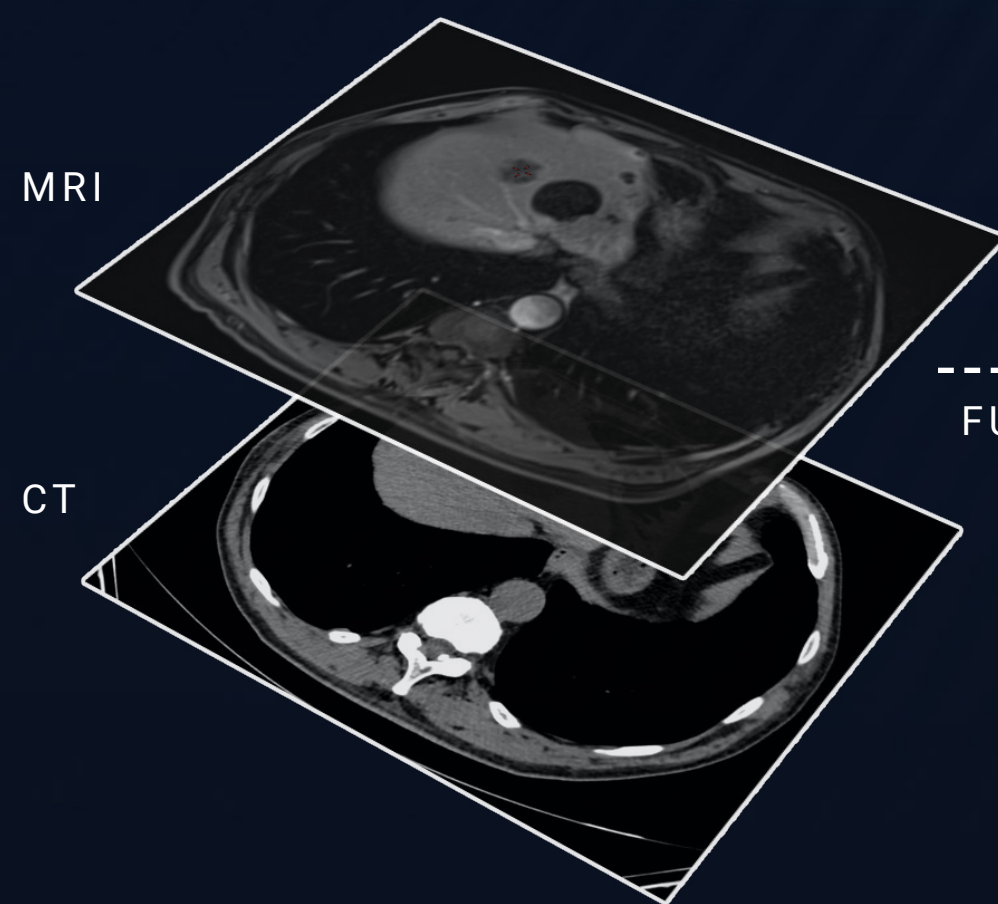
2 Target

3 Deliver

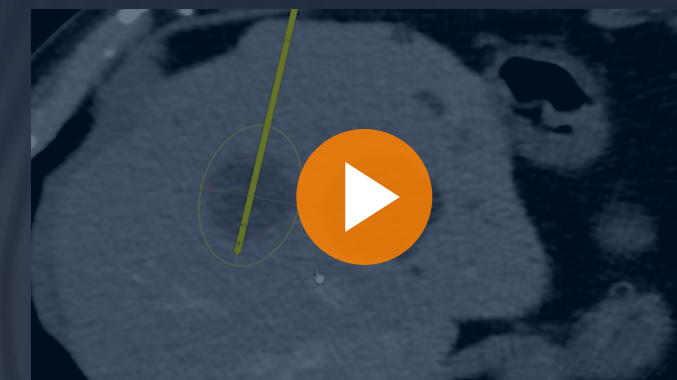
4 Confirm

Advanced planning software

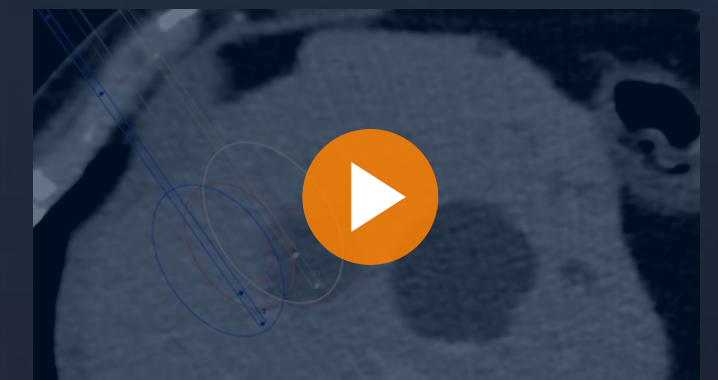
- Fusion of CT and MRI images
- Enhance visualization of the tumor
- Multi-needle planning in 3D
- Real-time ablation zone overlay



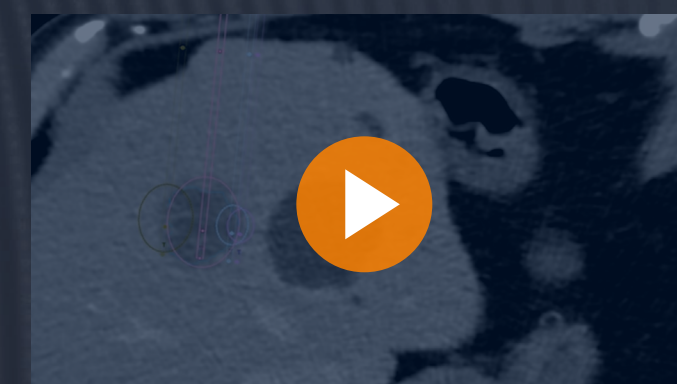
SEE IT IN ACTION



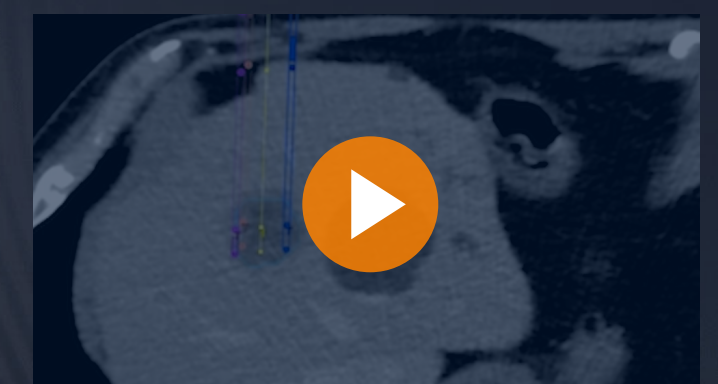
▶ **WATCH** Single-needle MWA



▶ **WATCH** Multi-needle MWA



▶ **WATCH** Multi-needle Cryo



▶ **WATCH** Multi-needle IRE

Epione[®] standardizes procedure workflow in one single solution

Setup

1 Plan

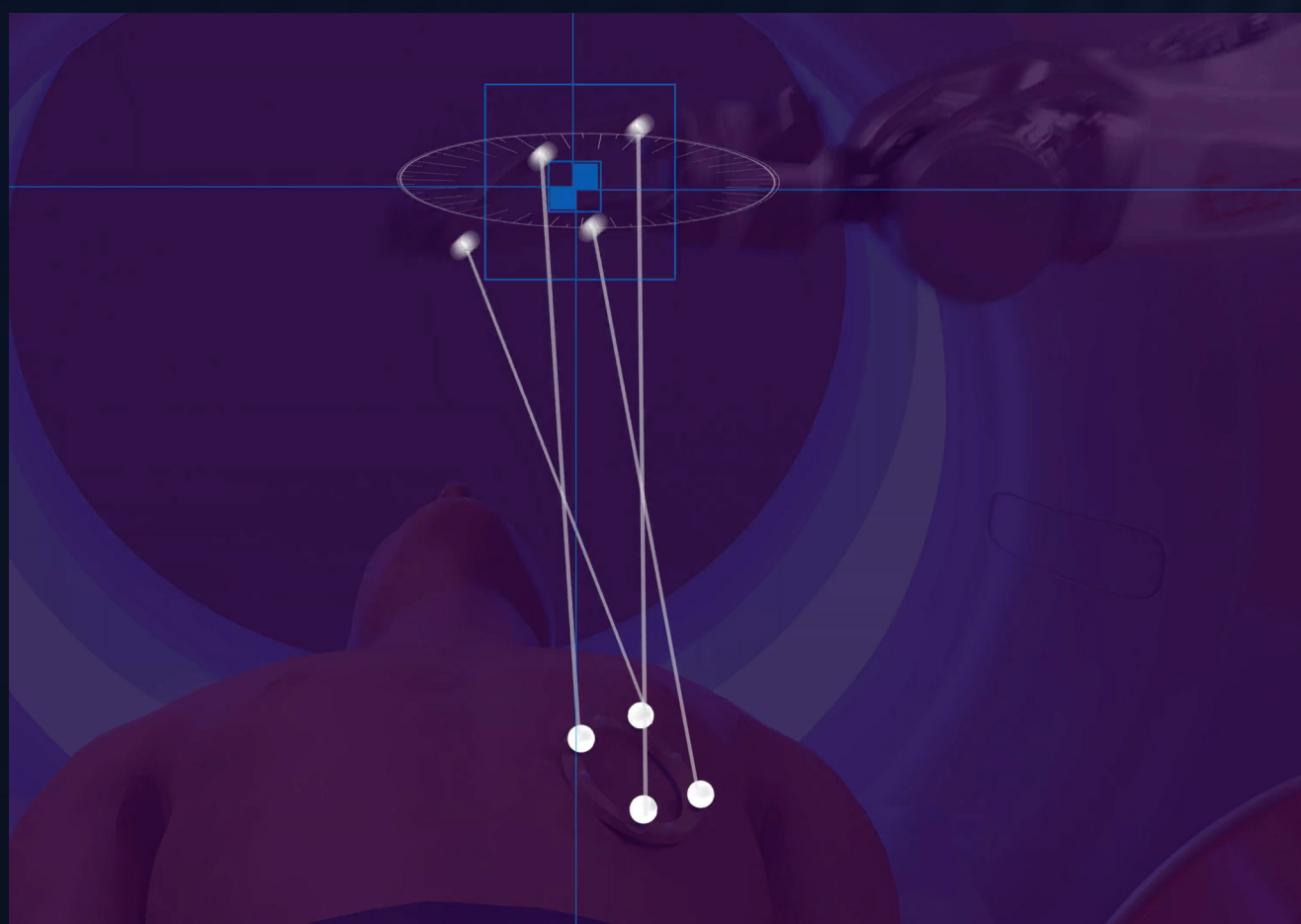
2 Target

3 Deliver

4 Confirm

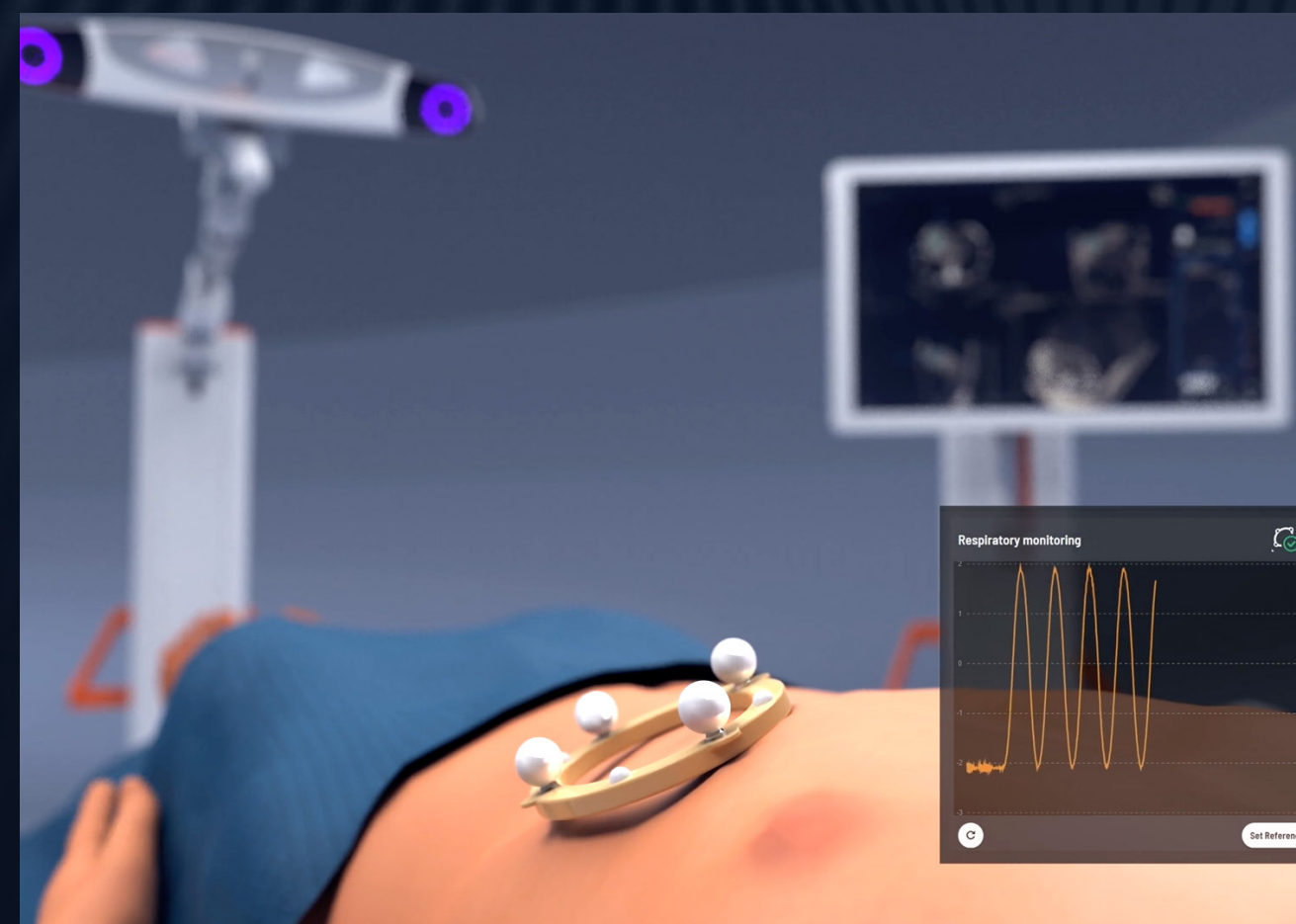
Registers patients for accurate placement

The camera registers the patient reference to continually track patient movement and respiration



Solves for patient movement and respiration

Reference level is set to ensure the same level of apnea is achieved during imaging and needle placement



SEE IT IN ACTION



▶ **WATCH** Patient Registration

Epione[®] standardizes procedure workflow in one single solution

Setup

1 Plan

2 Target

3 Deliver

4 Confirm

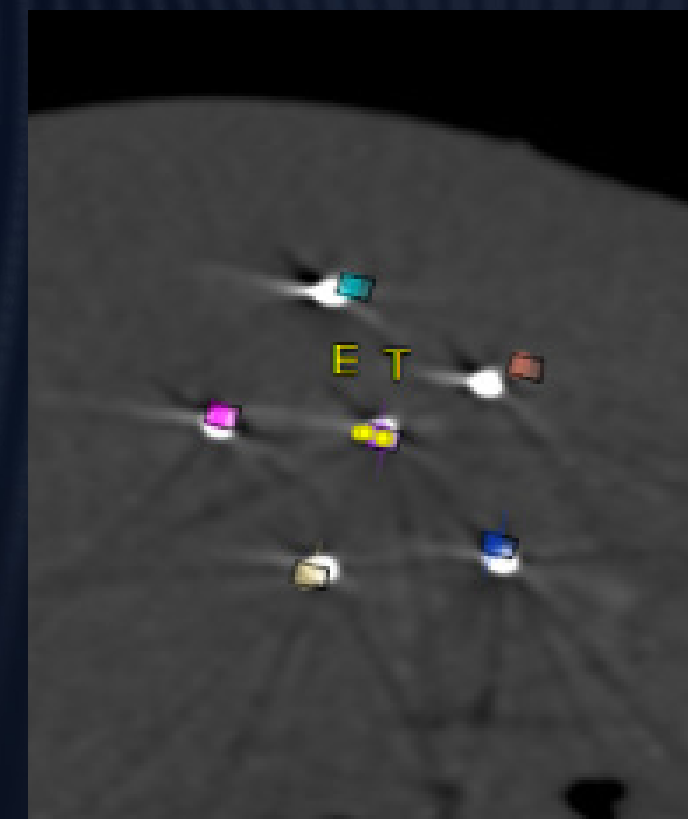
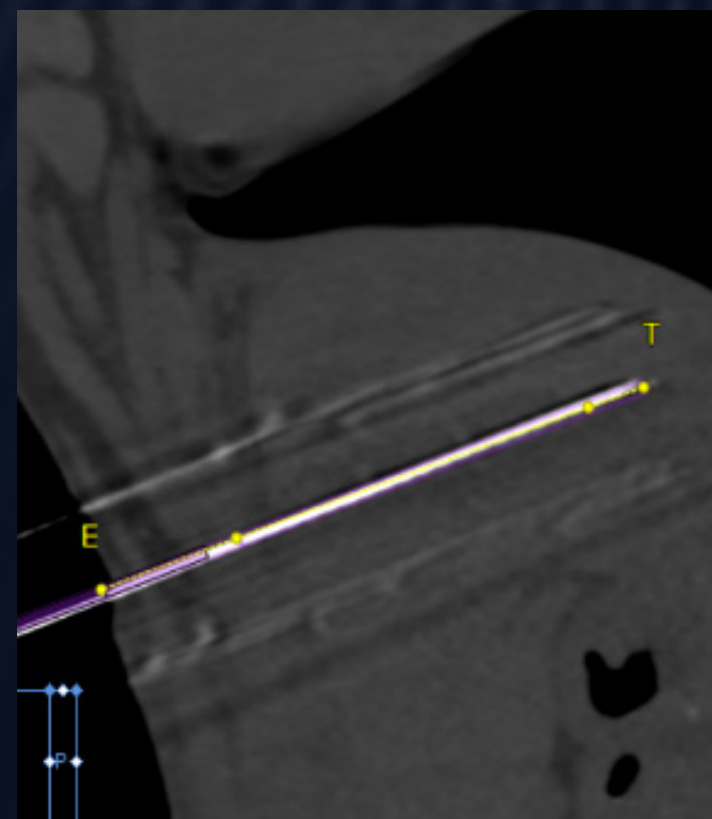
Preserve tactile feedback

- Physician remains in control
- Universal needle guide
- Quick and safe needle release
- 6 degrees of freedom for dexterity
- Works with 11g-19g needles

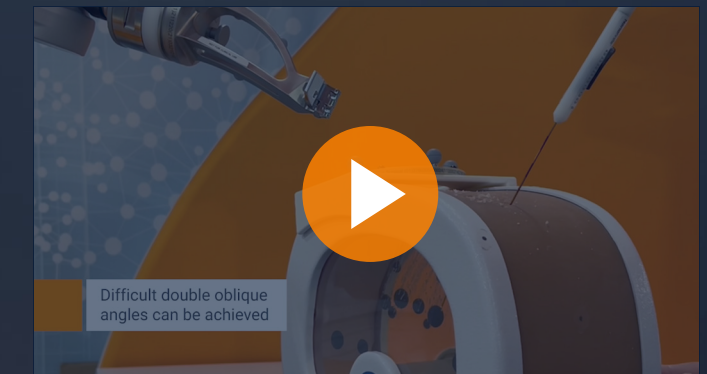


Achieve complex configurations

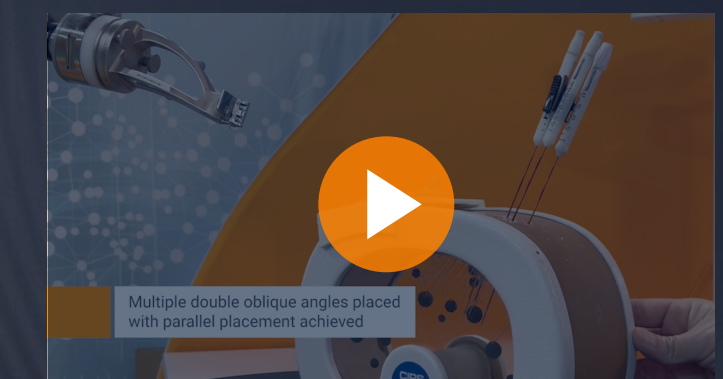
- Simple multi-needle workflow to achieve precise, parallel spacing
- Efficiently target tumors using complex angulation and oblique trajectories



SEE IT IN ACTION



▶ **WATCH** Single-needle Placement



▶ **WATCH** Multi-needle Placement

Epione[®] standardizes procedure workflow in one single solution

Setup

1 Plan

2 Target

3 Deliver

4 Confirm

Post-ablation treatment confirmation

- Fusion of pre-and post-ablation images
- Confirmation software verifies adequate tumor margins immediately following the procedure

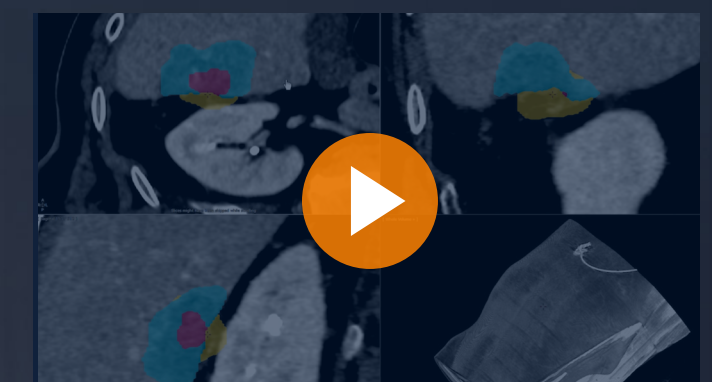
The image displays a medical imaging interface for post-ablation confirmation. It features two side-by-side grayscale images of a tumor. The left image shows the tumor in blue, labeled 'Tumor'. The right image shows the tumor in blue, surrounded by a pink 'Ablation zone' and a yellow 'Uncovered margin'. A blue arrow points from the tumor in the left image to the tumor in the right image. To the right of the images is an 'Assessment' panel with the following data:

Assessment	
Tumor	HCC
Ablation	Procedure #01
Ablation Margin (mm)	- 5 +
Uncovered area	
Tumor coverage	● (Green)
Margin coverage	● (Red)
Minimal ablative margin (mm)	2.5

At the bottom of the assessment panel are 'Cancel' and 'Display Area' buttons.

Decide if additional treatment is necessary before the patient leaves the room

SEE IT IN ACTION



▶ WATCH Confirmation

Contact

Headquarters

Quantum Surgical
1000, Rue Mas de Verchant
34000 Montpellier
France



[QuantumSurgical.com](https://www.QuantumSurgical.com)



info@quantumsurgical.com



[QuantumSurgical](https://www.linkedin.com/company/QuantumSurgical)



[@QuantumSurgical](https://twitter.com/QuantumSurgical)

United States

Quantum Surgical Inc
801 Brickell Avenue, Suite 809
Miami, FL 33131



Epione® device is CE marked and FDA cleared.

©2023 Quantum Surgical SAS. All rights reserved. Product and brand names/logos are trademarks of Quantum Surgical. MKG-PDT-0038 RevA. Issued: Aug-2023.